



# *AUDIO VISUAL & OTHER SERVICES*

## *OPTIONS & PRICING*

Create an engaging multimedia experience with Mystic Lake Center's advanced technological capabilities. Meeting and event spaces feature built-in lighting and AV systems with HD projection and video screens. Worry-free video presentation systems are compatible with all major streaming and online meeting platforms. Whatever your needs, our experienced onsite AV team is here to ensure that your meeting or event is a memorable success.



**MYSTIC LAKE  
CENTER**

OWNED & OPERATED BY THE SHAKOPEE MDEWAKANTON SIOUX COMMUNITY

# AUDIO

## MICROPHONES

Shure Wireless Lavalier/ Handheld/Headset	\$115
--	-------

Wired Handheld with Tabletop Stand	\$25
------------------------------------	------

## AUDIO ACCESSORIES

Computer Audio (D.I.) Box	\$20
---------------------------	------

Audio Feed XLR (Recording or Input)	\$25 per feed
-------------------------------------	---------------

Background Music	\$25
------------------	------

## PA SYSTEMS

Two QSC Paired Powered Speakers and Two Subwoofers	\$470
---	-------

Four QSC KLA Line Array Speakers Ground Stacked on Four 18" QSC Subs	\$1,050
--	---------

Six Speaker Line Array with Four Subs	\$1,600
---------------------------------------	---------

16 Channel Digital Mixer with Snake	\$250
-------------------------------------	-------

32 Channel Digital Mixer with Snake	\$475
-------------------------------------	-------

## INTERCOM SYSTEMS

Wireless Intercom System (Up to 10 Headset Packs)	\$250
--	-------



Prices subject to change and applicable sales tax.

OWNED & OPERATED BY THE SHAKOPEE MDEWAKANTON SIOUX COMMUNITY



# VIDEO

---

## VIDEO RECORDERS/PLAYERS

---

DVD Player	\$35
Session Recording (does not include camera)	\$250

## MONITORS

---

40" LCD 16:9 w/stand	\$175
49" LCD 16:9 w/stand	\$300
65" LCD 16:9 w/stand	\$425
Truss Tower Video Display (Includes one truss tower and base, one 49" LCD display and mount, cabling and labor.)	\$375

## CAMCORDERS/CAMERAS

---

Sony® ENG Broadcast Camera	\$1000
Panasonic® Robocam	\$1000

## DISPLAY SCREENS

---

9'x16' Fastfold Screen w/dress kit (16:9)	\$300
7.5'x11' Fastfold Screen (16:9) (no dress kit)	\$190
Video Wall(s)	Quote
Video Walls (Mystic Showroom®)	\$2,550

## PROJECTORS

---

7K Lumen HD Projector	\$600
12K Lumen HD Projector	\$1,050
20K Lumen HD Projector (call for quote)	Quote

## VIDEO SWITCHERS/PROCESSORS

---

HDMI or VGA Splitter	\$30
Seamless Video Switcher (Digital)	\$425

## VIDEO MISCELLANEOUS

---

Computer Adaptors	\$30
Perfect Cue	\$75
Computer Cable (VGA, HDMI ect.)	\$20
Presenter's Remote	\$55
AV Cart with Power Extension	\$25

# LIGHTING

## INDIVIDUAL FIXTURES

6" Source Four Par with Dimming Circuit (Used for stage wash, pin spotting and wall gobos)	\$35
LED Par Light (ETC, Chavet)	\$25
LED Bar Light (Chavet)	\$40
Moving Head Fixtures (various)	\$95
Follow Spot with Operator	\$400

## LIGHTING CONTROL

NX2 Digital Lighting Console	\$255
------------------------------	-------

## LIGHTING DÉCOR

In-house Stock Gobos (textured wall lighting)	\$10/ea
Custom Gobo (steel or glass)	Quote
Mirror Ball	\$65
Aluminum Truss with Base (12")	\$65
Hazer with Fluid	\$130
18'x50' Black or White Pipe & Drape	\$10/ft
Custom Backdrop	Quote
Color Gel (per sheet)	\$20

## RIGGING

Rigging Point	\$90
Scissor Lift (Additional Labor Needed)	\$225

## STAGING

4'x8' Stage Decking with Skirt	\$65 ea.
4'x8' Stage Decking with Skirt 32" high with Bracing	\$75 ea.
Staging Steps (single)	\$15
Staging Steps (triple)	\$80
Showroom Steps	\$210

## LIGHTING PACKAGES

### ATMOSPHERIC LIGHTING PACKAGE | \$300

LED Pixbar up-lighting of a Ballroom or Meeting space

### CORPORATE LIGHTING PACKAGE | \$650

Includes Atmospheric Lighting Package + 4 Stage Wash Leko lights, 2 Gobo Leko lights and NX2 lighting console

*\*custom Gobos not included*

### KEYNOTE LIGHTING PACKAGE | \$950

Includes Atmospheric Lighting Package + 4 Stage Wash leko lights, 4 Gobo Leko lights, 8 Texture Leko lights and NX2 lighting console

*\*custom Gobos not included*

### GALA LIGHTING PACKAGE | \$1,660

Includes Atmospheric Lighting Package, 6 Stage Wash Leko lights, 6 Gobo Leko lights, 8 Moving-Head light fixtures and NX2 lighting console

*\*custom Gobos not included*

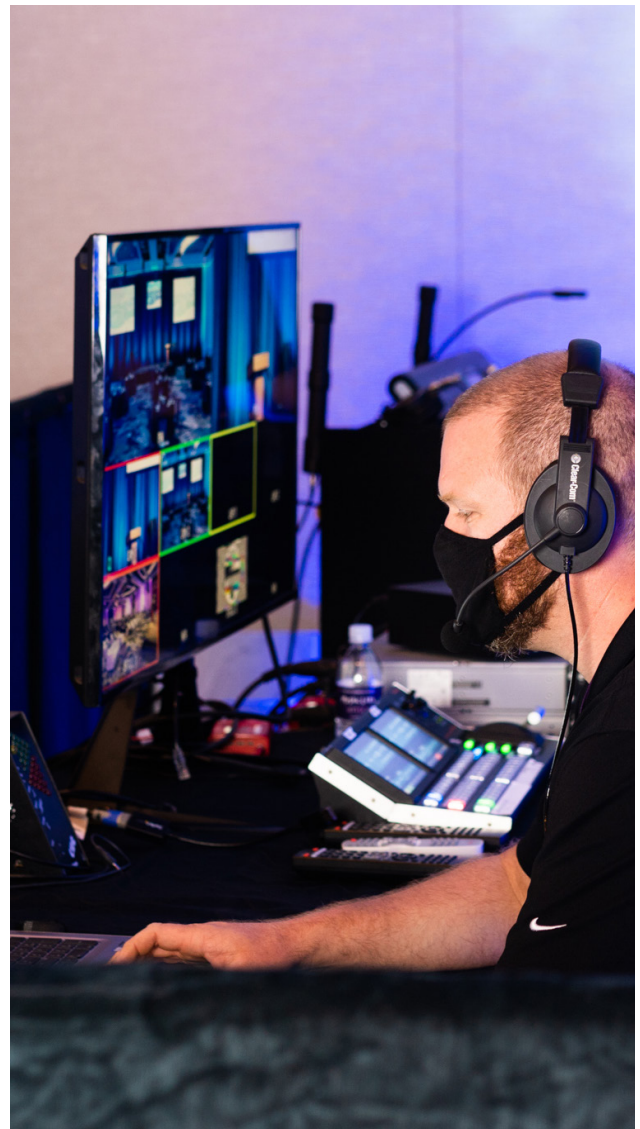
Prices subject to change and applicable sales tax.

# LABOR RATE

AV technical assistance starts at \$75/hour with a minimum of 4 hours. Additional labor charges based on extent of setup. 72-hour notice required for all labor.

AV Tech (minimum 4 hours)	\$75/hr
AV Tech Assistance After Hours	\$100/hr
AV Tech Assistance Overtime	\$140/hr
Stagehand	\$500/8hrs
Audio Engineer	\$600/8hrs
Lighting Designer	\$600/8hrs

Spot Operator	\$500/8hrs
Camera Operator	\$500/8hrs
AV Supervisor	\$325/8hrs
Show Call Spot Fee	\$75
Show Call Camera Fee	\$75



# STREAMING PLATFORMS

We have the capability to send source video and audio to many streaming platforms and can stream to multiple platforms simultaneously.

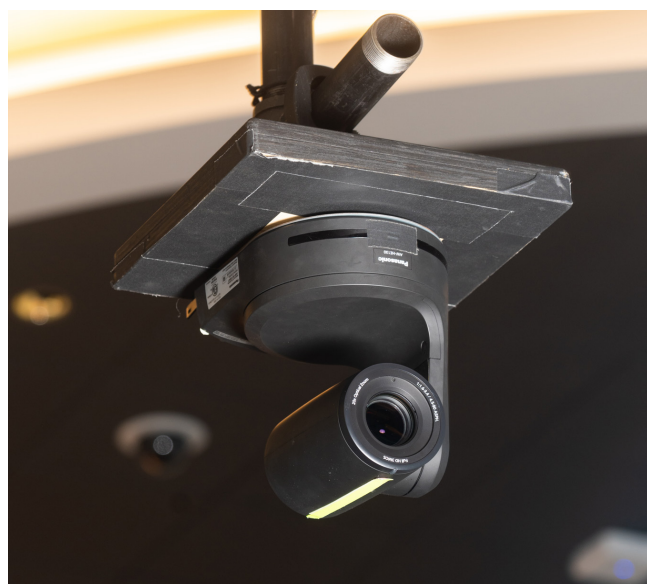
## SUPPORTED PLATFORMS

- BoxCast
- Cloud Media Group
- DaCast
- Facebook
- IBM Cloud
- Livestream (Vimeo)
- Meridix
- Ministerio TV
- Periscope/Twitter
- Restream
- ScaleEngine
- Smashcast
- StreamingChurch.tv
- StreamShark.io
- StreamSpot
- TiKiLive
- Twitch
- Vimeo
- Wowza Streaming Cloud
- Youtube Live
- Custom RTMP Server

If you do not have a preferred platform, we will use our house Vimeo account and provide links for distribution. Vimeo allows several methods of stream access: public, private link and password. Vimeo also offers the ability to include the following:

- Live Chat During Stream (\$50 add-on)
- User Polls (\$50 add-on)
- Embed Code (free upon request)
- Analytics Dashboard & Reports
- Archive & Download of Completed Events

We are able to host up to three concurrent streams via Vimeo. We may be able to add up to three additional concurrent streams based on availability. Additional streams must be confirmed and reserved in advance.



## STREAMING PACKAGE 1

---

**\$650 per day** | Basic package provides a single stream to a single platform.

- Single concurrent stream up to 1080p 6Mbps (29.97 or 59.94). Single delivery platform.
- Stream will be a direct feed of the event program audio/video “as is” (no additional production or alternate stream content).
- Up to an eight clock hour span of content streaming (per day). Additional hours may be added to the day at the rate of \$50 per hour.
- Video and audio will stream directly to your preferred platform OR we will provide you with a Vimeo streaming link to share with your remote audience.

### PREREQUISITES

Audio/Video package

Camera(s) and switcher of choice

Appropriate network access and bandwidth for content

## STREAMING PACKAGE 2

---

**\$1,550 per day** | Package 2 includes everything in Package 1 and adds a second layer of video switching (vMix) that can be applied to the outgoing stream. This addition provides the ability to manage, switch and add unique elements to the stream content. (For instance, if your group has two programs for an event shown on separate displays for the live audience, such as an image while a speaker is presenting content, this solution allows the ability to mix or combine those program feeds to your remote audience for a more complete experience.)

- Single concurrent stream/program up to 1080P 6Mbps (29.97 or 59.94). Single delivery platform.
- Stream will be a combination of the event program(s) and specialized content or switching for the online audience.
- Up to an eight clock hour span of content streaming (per day). Additional hours may be added to the day at the rate of \$100 per hour.
- Video and audio will stream directly to your preferred platform OR we will provide you with a Vimeo streaming link to share with your remote audience.

### PREREQUISITES

Audio/Video package

Camera(s) and switcher of choice

Appropriate network access and bandwidth for content

## STREAMING PACKAGE 3

---

**\$2,300 per day** | Package 3 includes everything in Package 2 plus incorporates the ability to add an online meeting (via Zoom or similar) into the stream.

- Single concurrent stream/program up to 1080P 6Mbps (29.97 or 59.94). Single delivery platform.
- Stream will be a combination of the event program, provided content and/or switching for the online audience as well as integration of the online meeting.
- Up to an eight clock hour span of content streaming (per day). Additional hours may be added to the day at the rate of \$150 per hour.
- Video and audio will stream directly to your preferred platform OR we will provide you with a Vimeo streaming link to share with your remote audience.

### PREREQUISITES

Audio/Video package

Camera(s) and switcher of choice

Appropriate network access and bandwidth for content

Dedicated computer (with video IN and OUT) and operator to run the meeting application

# STREAMING ADD-ON OPTIONS

## ADDITIONAL DELIVERY PLATFORMS

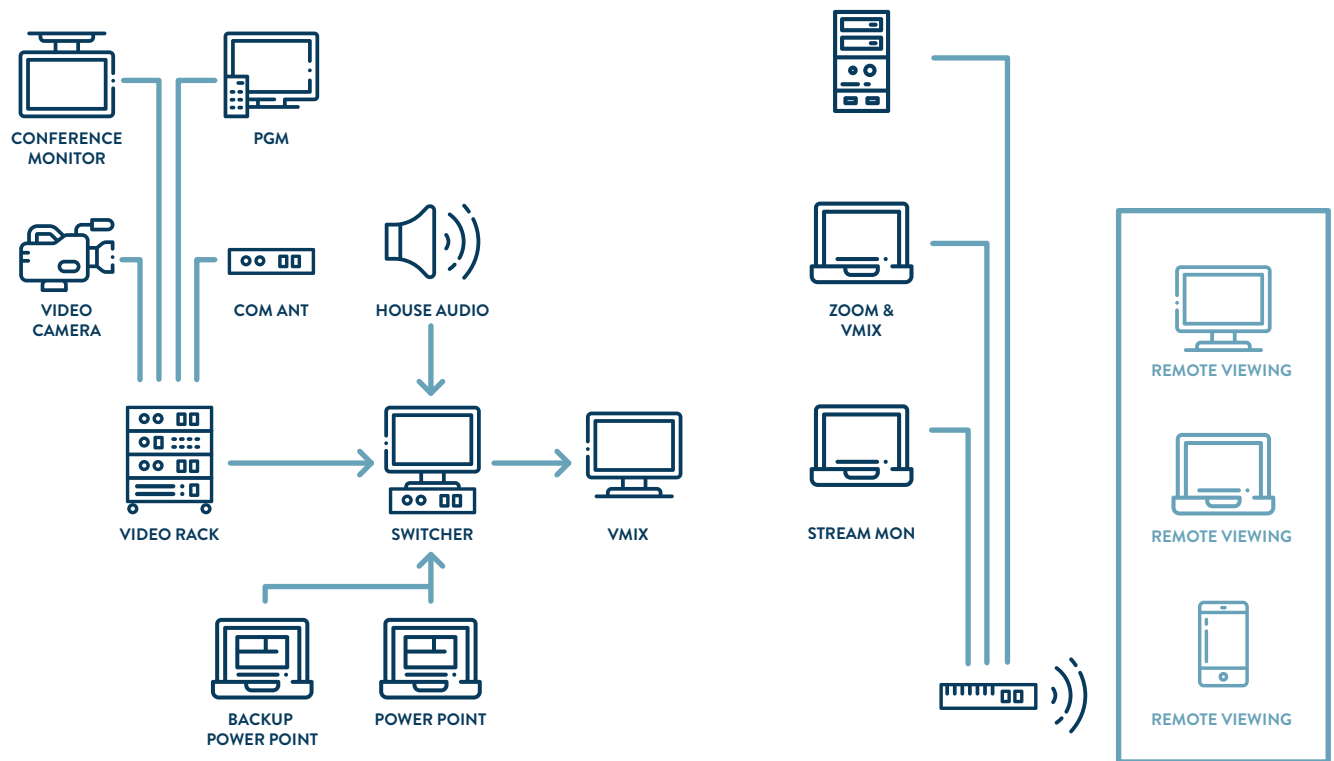
\$100 setup fee per each additional platform  
(resources: 1 person 2 hours for set up, testing and monitoring)

## ADDITIONAL STREAM TIME (BEYOND 8 HOURS PER DAY)

PKG1 - \$50 per hour  
PKG2 - \$100 per hour  
PKG3 - \$150 per hour  
(additional labor time in addition to this as utilized)

## RECORDING PROGRAM STREAM (EACH)

\$120 per unit (unit = up to eight hours within one event day)  
delivered on thumb drive or via Dropbox download link



# SHOWROOM VIDEO IMAG PACKAGES

## BASIC PACKAGE

\$3,800

Includes a single camera, computer interface and up to eight hours of labor or AV assistance.

## ADVANCED PACKAGE

\$4,850

Includes two broadcast cameras, two robo cameras, computer interface and up to eight hours of labor or AV assistance.

Prices subject to change and applicable sales tax.

OWNED & OPERATED BY THE SHAKOPEE MDEWAKANTON SIOUX COMMUNITY



# BREAKOUT ROOM PACKAGES

---

## BASIC PRESENTATION

---

Single room package available in:  
Anoka, Isanti, Owatonna, Chaska, Winona,  
Little Crow, Wabasha, Shakopee, Mahkato

7K Lumen HD Projector

16:10 HD Drop Down Screen

Computer Connections

Computer Audio Interface

Podium Audio Connection/One Wired Microphone

1 Hour Of AV Assistance

PACKAGE \$650

## ADVANCED PRESENTATION

---

Single room package available in:  
Anoka, Isanti, Owatonna, Chaska, Winona

7K Lumen HD Projector

16:10 HD Drop Down Screen

Computer Connections

Computer Audio Interface

Podium Audio Connection/One Wired Microphone

One Wireless Microphone (Lavalier/Handheld/Headset)

1 Hour Of AV Assistance

PACKAGE \$750

## SHAKOPEE BOARDROOM PACKAGE

---

80" HD Video Display

Computer Connections

Computer Audio Interface

Speakerphone

1 Hour Of AV Assistance

PACKAGE \$500



# INTERNET SERVICES

---

Complimentary internet access is available property wide for email and web browsing.  
Best utilized for groups of 40 or less or for playing short web-based videos.

## WI-MEET PACKAGE

\$640/day

Designed for web-based presentations, product demonstrations and trainings. The Wi-Meet package is ideal for meetings or events with 40 – 80 guests and includes:

3 Mbps of dedicated bandwidth for presenter(s)

10 Mbps of dedicated bandwidth for attendees

On-site IT staff to monitor and manage WiFi network

## WI-COMMUNICATE PACKAGE

\$1,350/day

Designed for conferences or event with multiple breakout rooms, high-definition presentations and live social media feeds. The Wi-Communicate package is ideal for meetings or events with 80 – 120 guests and includes:

6 Mbps of dedicated bandwidth for presenter(s)

40 Mbps of dedicated bandwidth for attendees

On-site IT staff to monitor and manage WiFi network

## WI-HYBRID PACKAGE

\$2,950/day

Designed for conferences with multiple breakout rooms, remote attendees, virtual offices and fully integrated hybrid meetings. The Wi-Hybrid package is ideal for large conferences or events with live streaming and connecting to remote locations and includes:

100 Mbps of dedicated bandwidth to conduct hybrid meetings

Dedicated bandwidth for breakout room presenter(s) with wired connections available

On-site IT staff to monitor and manage WiFi network

One wired connection with 6 Mbps of dedicated bandwidth per breakout room

Hardwire Connection

\$300/day

Credit Card Network Connection

\$65/day

Add Hard Line to any WiFi package

\$130/day

Additional Bandwidth

\$10 per MB/day

Prices subject to change and applicable sales tax.

## PHONE SERVICE

Local/800 Phone Service with Handset and dedicated phone	\$50
Business Speakerphone with long distance and dedicated phone	\$100

## POWER

Tradeshow Booth 120VAC 20A (preorder)	\$95
Tradeshow Booth 120VAC 20A (preorder)	\$120
Tradeshow Booth 208VAC 3P 200A (preorder)	\$370
Tradeshow Booth 208VAC 3P 200A (day of)	\$470
Tradeshow Booth 240 VAC 50A (preorder)	\$150
Tradeshow Booth 240 VAC 50A (day of)	\$250
400 AMP 3 Phase with Distro	\$470
Extension Cord with Quad Box	\$50 ea.





# MYSTIC LAKE CENTER

OWNED & OPERATED BY THE SHAKOPEE MDEWAKANTON SIOUX COMMUNITY

2400 Mystic Lake Blvd.  
Prior Lake, 55372, MN  
[mysticlakecenter.com](http://mysticlakecenter.com)  
800-262-7799 Ext.66528  
[sales@mysticlakecenter.com](mailto:sales@mysticlakecenter.com)